

## Integration auf Basis von BizTalk Server

Harald Haschtschek  
Integration Architect  
Microsoft Deutschland GmbH  
[haraldha@microsoft.com](mailto:haraldha@microsoft.com)



# Agenda

---

- Herausforderungen
- Architektur und Grundlagen
- Orchestrierung von Diensten
- Anwendungsbeispiele



Oktober 2010							43. KW
Mo	Di	Mi	Do	Fr	Sa	So	
25.	26.	27.	28.	29.	30.	31.	
GIS&Internet							



# Customer Pain Points

---

## INCONSISTENT INFORMATION

Disparate systems

Proprietary data formats, messages, schemas

Investment in Legacy systems



## INEFFICIENT PROCESSES

High cost Manual processes

Lack of asset and processes visibility

Lack of collaboration with business partners



## LACK OF BUSINESS AGILITY

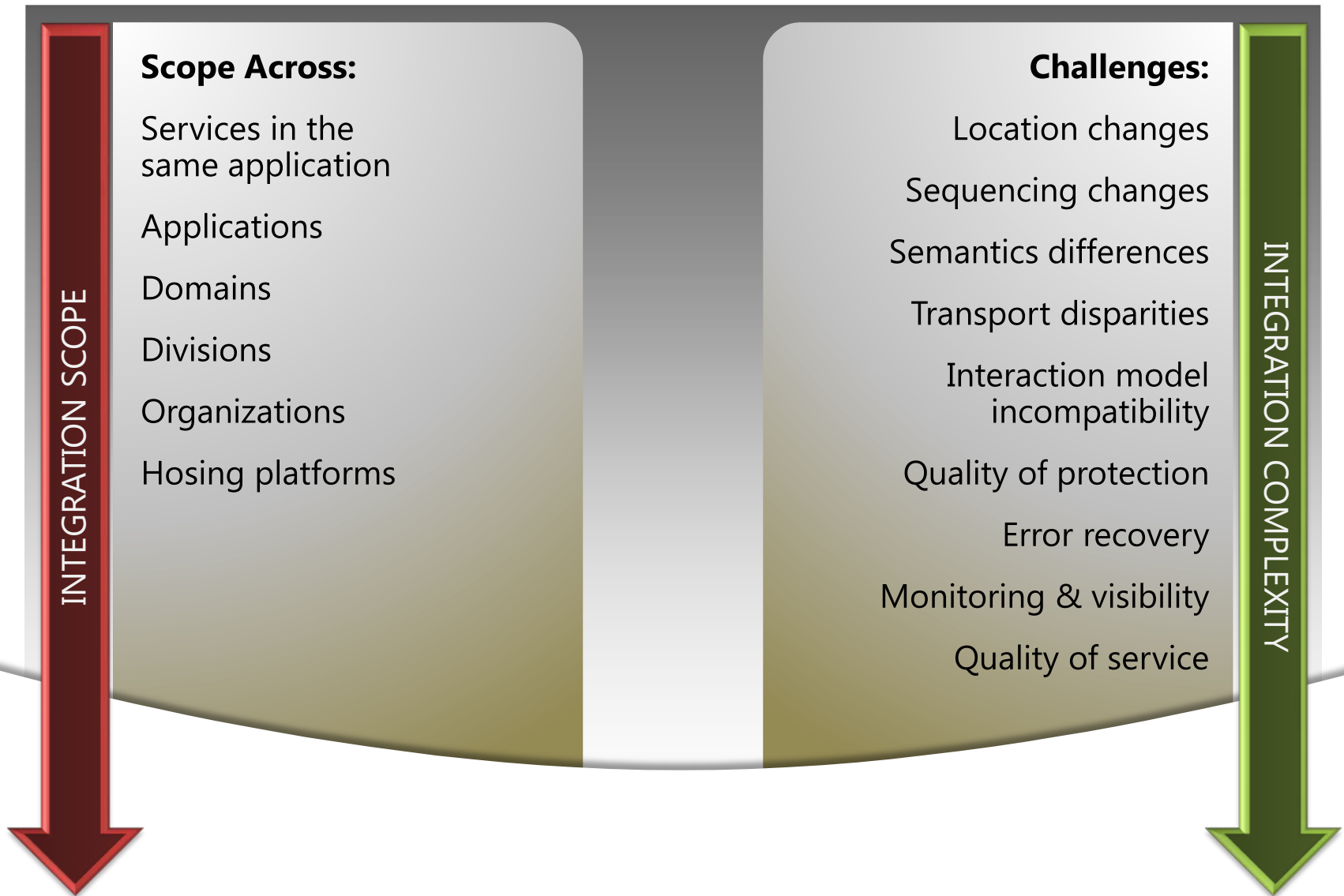
Changing business environment

New Standards and Compliance requirements

New Technological innovations



# Integration Challenges Increase with Scope



# BizTalk Server

## Business Integration Server



**PARTNERS** ▶ DATA



**APPLICATIONS** ▶ MESSAGES



**DEVICES** ▶ EVENTS



Microsoft®  
**BizTalk® Server**

INTEGRATE | AUTOMATE | SIMPLIFY



**CONSISTENCY**



**EFFICIENCY**



**AGILITY**

Integration von  
GIS-Funktionalitäten  
in Lösungen

Oktober 2010							43. KW
Mo	Di	Mi	Do	Fr	Sa	So	
25.	26.	27.	28.	29.	30.	31.	
GIS&Internet							



# BizTalk Server

CONTINUOUS INNOVATION EVERY 2-3 YEARS

## V1 BizTalk: Server 2000

XML B2B

## V2 BizTalk: Server 2002

EAI (partner adapters)  
Vertical B2B

## V3 BizTalk: Server 2004

BPM  
Partner Adapters

## V4 BizTalk: Server 2006

SOA/ESB  
Adapters in Box  
Host Integration

## V5 BizTalk: Server 2006 R2

SOA/ESB  
BPM  
Extend B2B  
(+EDI/AS2)  
**RFID**

## V6 BizTalk: Server 2009

**RFID Mobile & Std Pack**  
SOA/ESB(2.0)  
BPM  
Extend B2B  
**BAM+**  
**ALM Support**  
Updated Swift  
Hyper-V support  
SQL Sever 2008 and Windows Server 2008

## V7 BizTalk: Server 2010

**Windows AppFabric**  
SOA/ESB(2.1)  
SharePoint 2010 BCS  
Data Mapper  
Trading Partner Management  
Secure FTP  
Updated Swift & HIPAA  
SQL Sever 2008 R2  
Windows Server 2008 R2

500

Customers

2,000

Customers

4,000

Customers

7,000

Customers

8,500

Customers

10,500

Customers

Integrating VCS  
GIS-Funktionalitäten  
in Lösungen

Oktober 2010							43. KW
Mo	Di	Mi	Do	Fr	Sa	So	
25.	26.	27.	28.	29.	30.	31.	
GIS&Internet							



# BizTalk Server

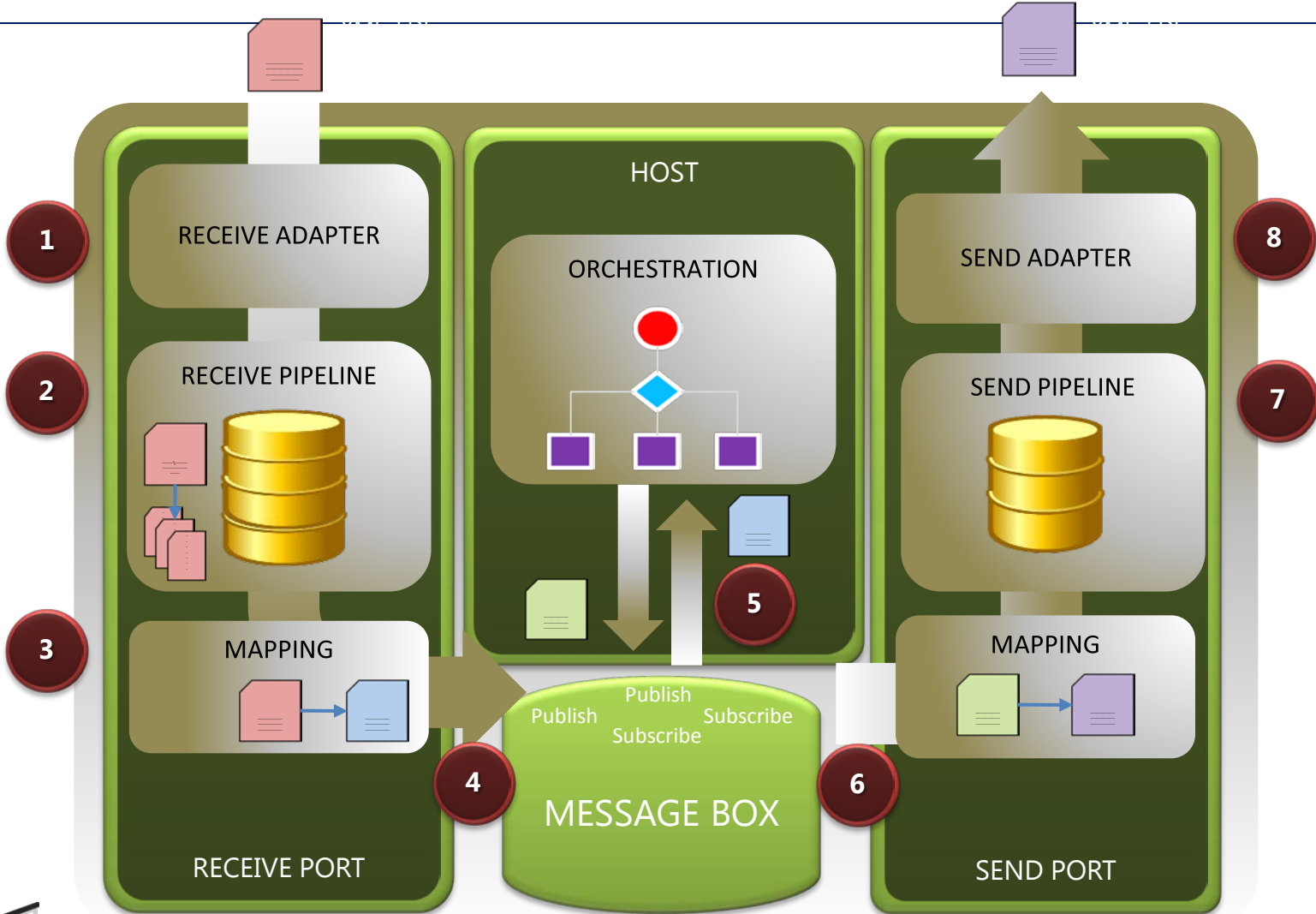


Integration von  
GIS-Funktionalitäten  
in Lösungen

Oktober 2010							43. KW
Mo	Di	Mi	Do	Fr	Sa	So	
25.	26.	27.	28.	29.	30.	31.	
GIS&Internet							



# BizTalk Runtime Architecture



Integration von GIS-Funktionalitäten in Lösungen

Oktober 2010							43. KW
Mo	Di	Mi	Do	Fr	Sa	So	
25.	26.	27.	28.	29.	30.	31.	
GIS&Internet							





# BizTalk Server Capabilities

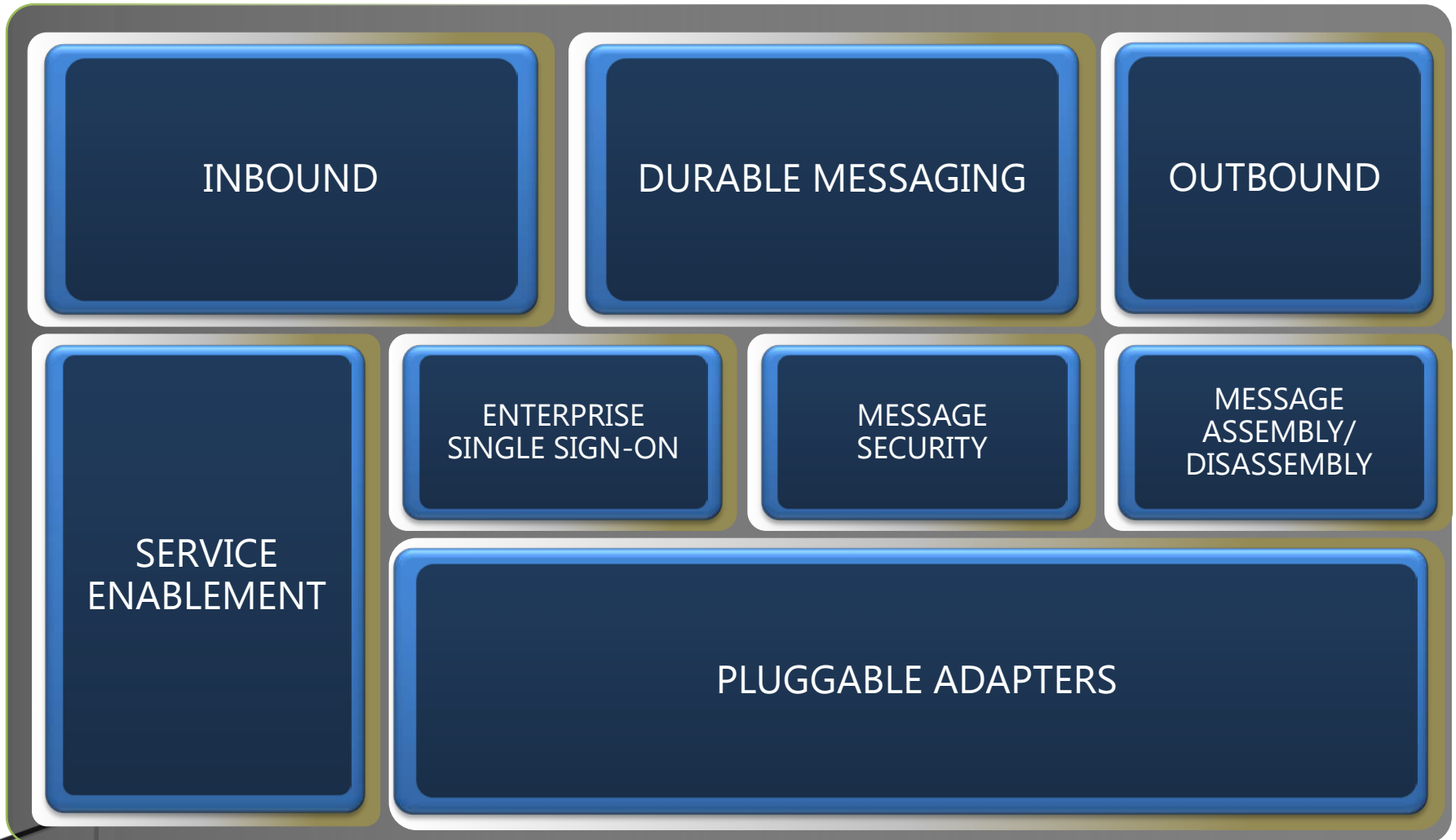


Integration von  
GIS-Funktionalitäten  
in Lösungen

Oktober 2010							43. KW
Mo	Di	Mi	Do	Fr	Sa	So	
25.	26.	27.	28.	29.	30.	31.	
GIS&Internet							



# Messaging

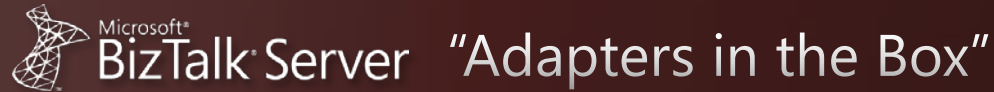


Integration von  
GIS-Funktionalitäten  
in Lösungen

Oktober 2010							43. KW
Mo	Di	Mi	Do	Fr	Sa	So	
25.	26.	27.	28.	29.	30.	31.	
GIS&Internet							



# BizTalk Simplifies Interoperability With The “Out Of The Box” Components



## TECHNOLOGY

MQ  
MSMQ  
HTTP  
SMTP  
File  
FTP/FTPs  
POP3  
SQL  
WCF  
(7 Bindings)  
SOAP  
SharePoint

## LOB

PeopleSoft  
JD Edwards OneWorld XE  
JD Edwards EnterpriseOne  
Oracle ODBC  
Siebel  
TIBCO Rendezvous  
TIBCO EMS  
SAP  
Microsoft Dynamics  
Microsoft Commerce Server

## LEGACY (Host)

**Host Applications**  
IBM mainframe zSeries  
(CICS and IMS)  
Midrange iSeries  
(AS/400)  
**IBM DB2**  
Mainframe DB2  
for z/OS  
Midrange DB2/400  
DB2 Universal  
Database for open  
platforms  
(AIX, Linux, Solaris,  
and Windows)

## ADAPTER PACK

SAP  
Oracle DB  
Siebel  
Oracle EBS  
SQL Server



# Orchestration Service Composition

FLOW  
CONTROL

PORT  
BINDING

SCOPES

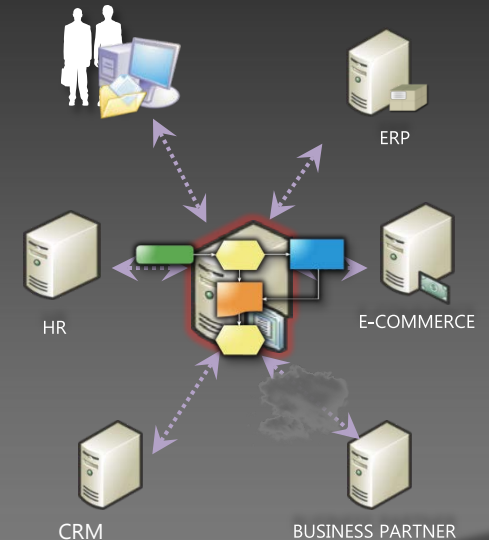
DESIGN  
PATTERNS

**Model driven visual logic**

**Technology Agnostic**

**Flexible transaction and exception handling**

**Reusable design patterns**

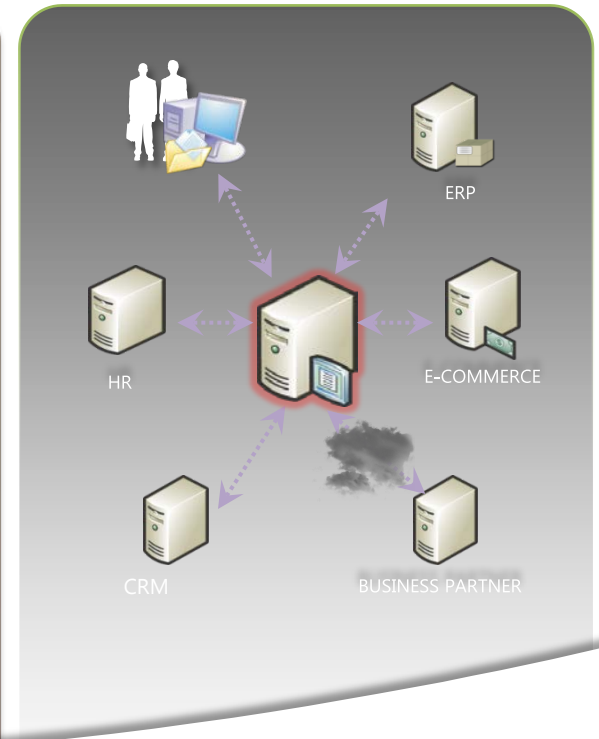


# Orchestration Benefits

Automates complex messaging patterns and system workflows

Increases manageability through visual development

Reduces change impact through separation of concerns



# Business Rule Framework Benefits

**BUSINESS RULE  
AUTHORING**

**BUSINESS RULE  
ENGINE (BRE)**

- Provide Rule abstraction and automation**
- Enable rapid rule changes to align with business needs**
- Increase information worker productivity**
- Provide consistent rules across various systems**

The screenshot displays a rule editor window titled "LoanAppApproval - Version 1.0 - Approved". The rule is structured as follows:

```
IF
  Conditions
  AND
    ( Monthly Base Income + Monthly Secondary Income ) is greater than Requested Loan Amount
  OR
    Months Employed is greater than or equal to 6
    Months In Current Home is greater than or equal to 6
THEN
  Actions
  Update the loan Status to Approved for this loan.
```



# Business Visibility

OBSERVATION  
DESIGN MODEL

EVENT OBSERVATION  
ENGINE

REPORTING

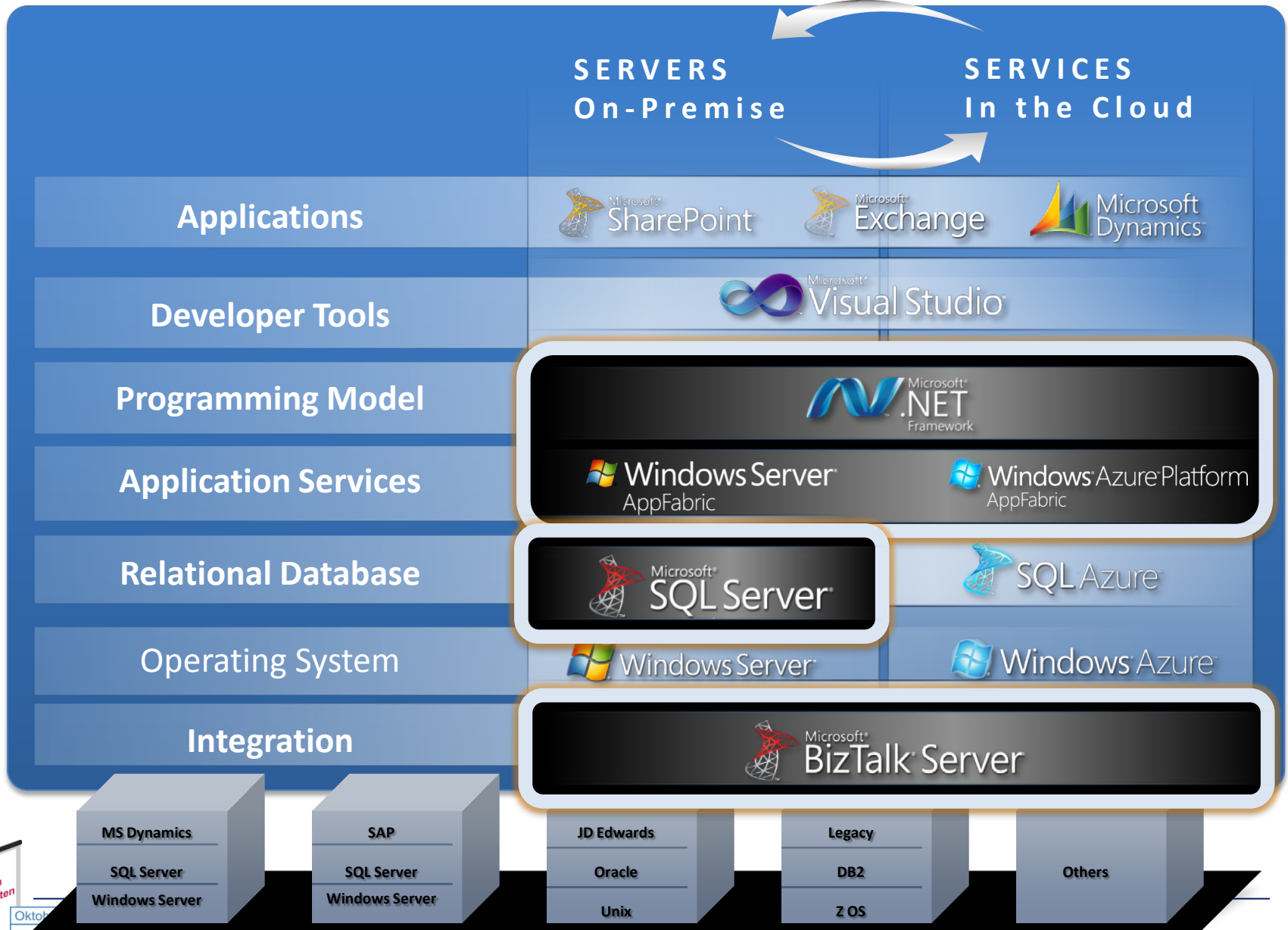
**Reduce costs** by escalating and mitigating problems earlier

**Increase visibility** of shared KPIs across organizational boundaries

**Enhance performance** of overall process execution



# Microsoft Integration Platform



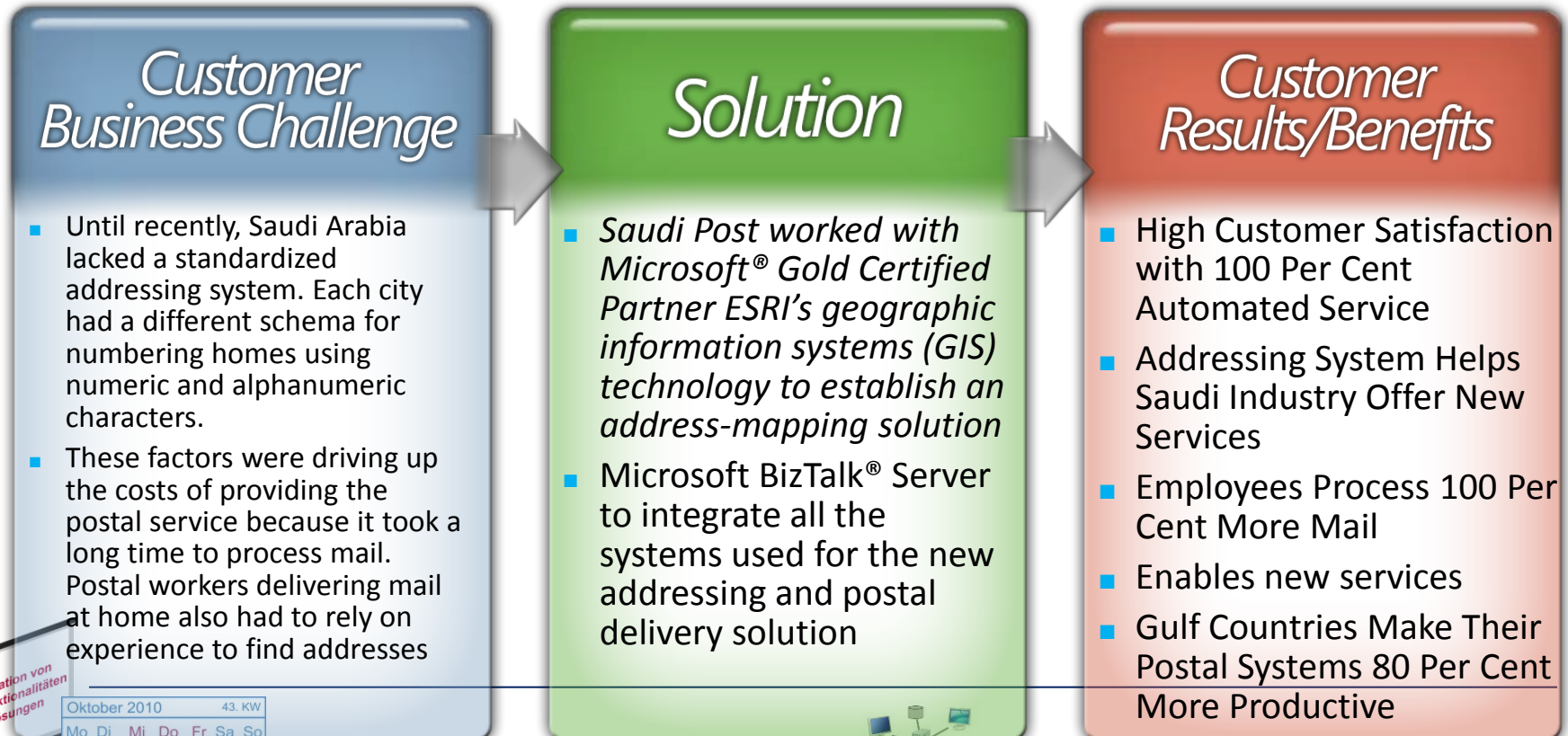
Integration von GIS-Funktionalitäten in Lösungen

Oktob  
 Mo Di Mi Do Fr Sa So  
 25. 26. 27. 28. 29. 30. 31.  
 GIS&Internet



Using integrated Microsoft technologies, we can track the mail, direct postal workers to the right address, and help ensure delivery within the appropriate time. An important factor for the project's success was integrating Microsoft technologies with other line-of-business applications

## Postal Workers Use Latest Technologies, Process 100 Per Cent More Mail Items a Day



Integration von GIS-Funktionalitäten in Lösungen

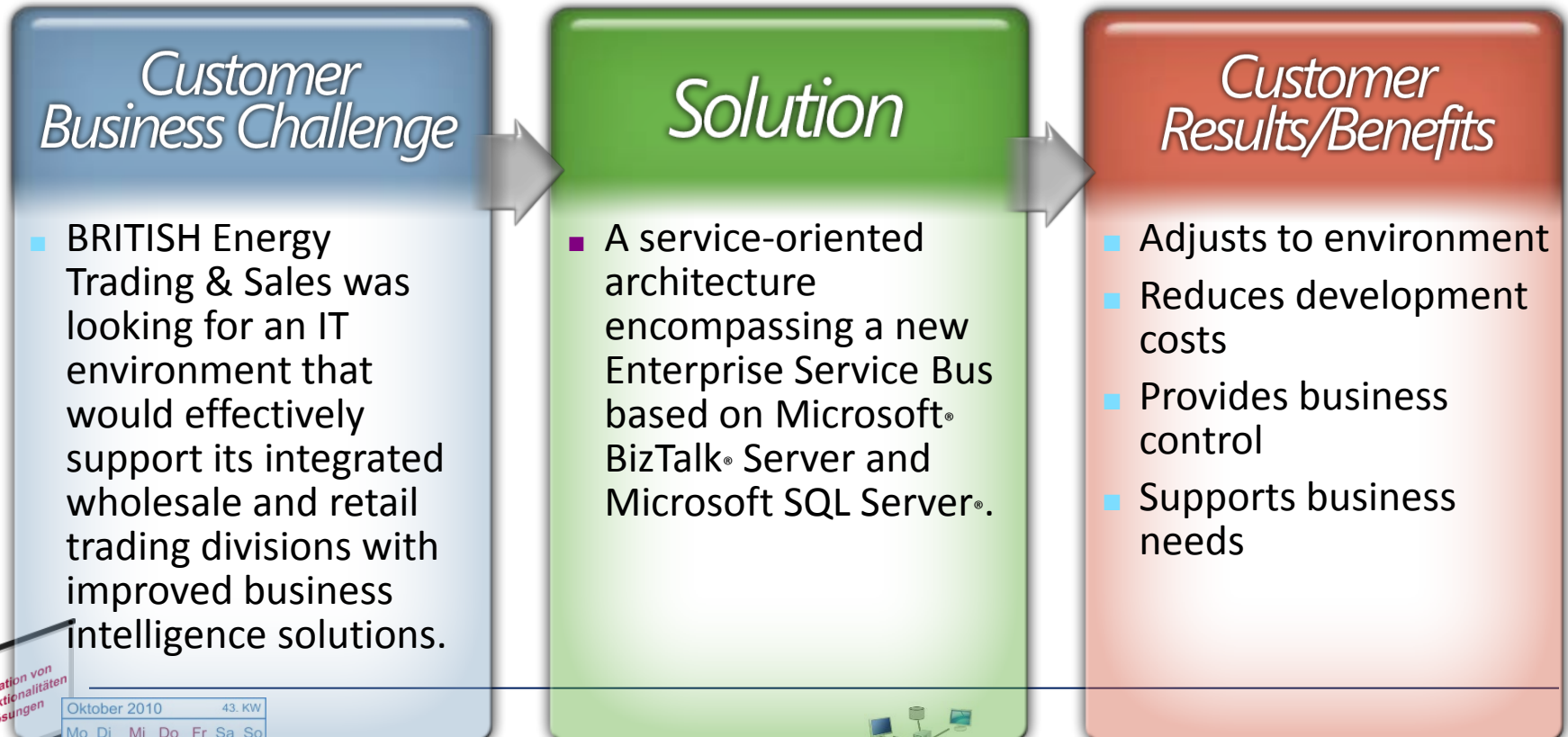
Oktober 2010							43. KW
Mo	Di	Mi	Do	Fr	Sa	So	
25.	26.	27.	28.	29.	30.	31.	
GIS&Internet							



*“Everything we create should be reusable and available for the next project or business request. We expect the investment in Microsoft technologies and strong design patterns to reduce our implementation costs by around 20 percent.”*

Jeremy Lock, Head of IT, British Energy Trading & Sales

# British Energy Trading & Sales Supports Integration With Business Intelligence Tools



Integration von GIS-Funktionalitäten in Lösungen

Oktober 2010							43. KW
Mo	Di	Mi	Do	Fr	Sa	So	
25.	26.	27.	28.	29.	30.	31.	
GIS&Internet							

