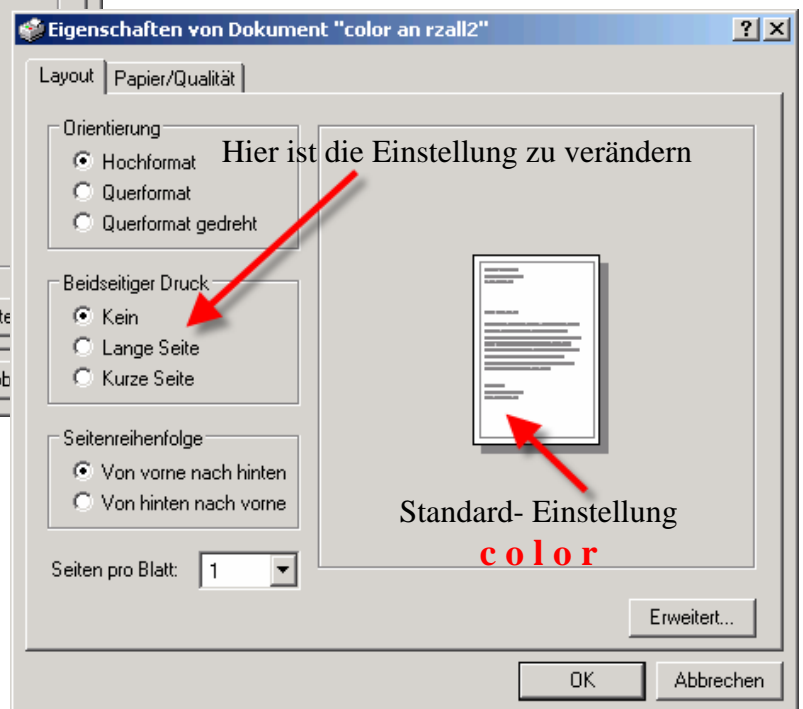
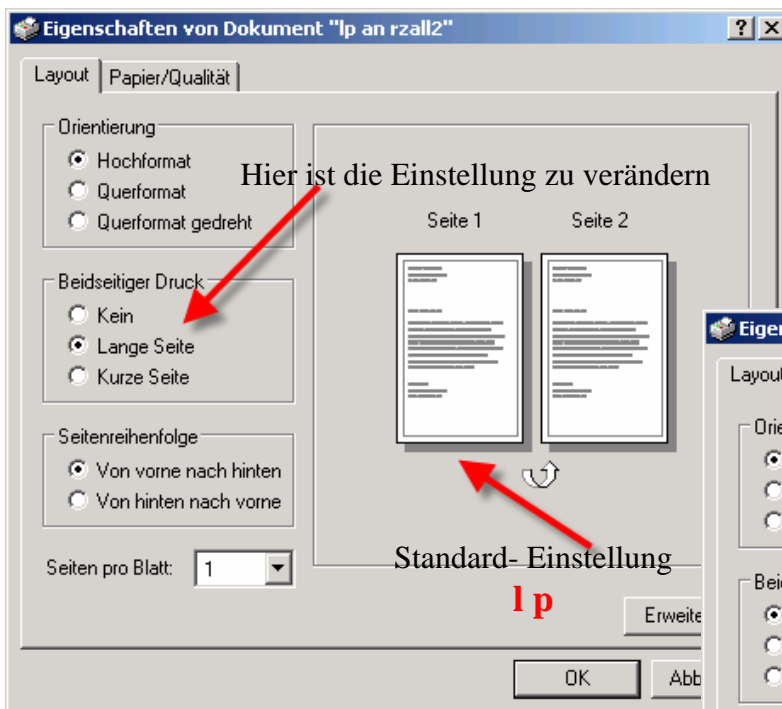
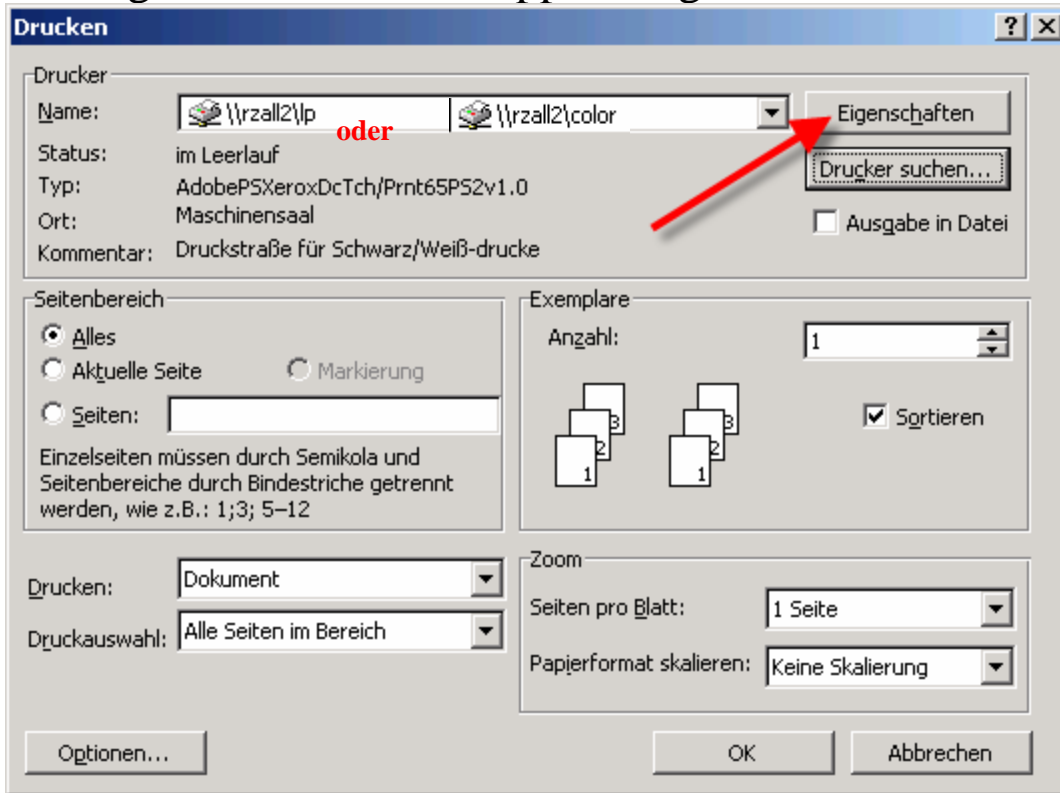




## Einstellungen für ein- bzw. doppelseitiges Drucken





## 100 g Papier für Diplomarbeiten am „LP“

The image shows a Windows printing dialog box titled "Drucken" (Print) for the printer "\\rzall2\lp". The printer status is "im Leerlauf" (idle). The printer type is "AdobePSXeroxDcTch/Prnt65PS2v1.0". The location is "Maschinensaal". The comment is "Druckstraße für Schwarz/Weiß-drucke".

The "Seitenbereich" (Page Range) section has "Alles" (All) selected. The "Exemplare" (Copies) section has "Anzahl: 1" and "Sortieren" checked. The "Zoom" section has "Seiten pro Blatt: 1 Seite" and "Papierformat skalieren: Keine Skalierung".

The "Eigenschaften" (Properties) button is highlighted with a red arrow. The "Eigenschaften von Dokument 'LPIP an rzall1'" dialog box is open, showing the "Papier/Qualität" (Paper/Quality) tab. The "Erweitert..." (Advanced...) button is highlighted with a red arrow.

The "Erweiterte Optionen für AdobePSXeroxDcTch/Prnt65PS2v1.0" dialog box is open, showing the "Druckermerkmale" (Printer Features) section. The "MediaColor" dropdown menu is open, and the "weiss" (white) option is highlighted with a red arrow. The "Finishing" dropdown menu is also open, showing "normal", "clear", and "weiss" options.



## Folien am „LP“ und „COLOR“

The image shows a sequence of three windows from a printer driver interface, with red arrows indicating the navigation path:

- Drucken:** The main window showing printer selection. The printer is set to "\\rzall2\lp oder". A red arrow points to the **Eigenschaften** button.
- Eigenschaften von Dokument "lp an rzall2":** The document properties window. The **Papier/Qualität** tab is selected. A red arrow points to the **Papierart** dropdown menu, which is open and shows **Transparency** selected.
- Erweiterte Optionen für AdobePSXeroxDcTch/Prnt65PS2v1.0:** The advanced options window. A red arrow points to the **Erweitert...** button. Another red arrow points to the **Finishing** dropdown menu, which is open and shows **clear** selected.